

FOR LEASE > WAREHOUSE

2915A FAITHFULL AVENUE

SASKATOON, SK



Premium warehouse space located on Faithfull Avenue in the heart of Saskatoon's North Industrial District. This prime location allows for easy access to Circle Drive, Idylwyld Drive, Highways 16, 11 and 12 and Saskatoon John G. Diefenbaker International Airport.

BUILDING PARTICULARS

- > 3,000 SF upgraded office space
- > Boardroom, office and large mezzanine
- > Natural lighting
- > Surface parking in front of building
- > 16' and 14' grade doors, 10' dock level door
- > Clear span ceiling 19' ranging up to 21'
- > 200 amp three phase power
- > Radiant heat in warehouse
- > Fully sprinklered

AREA FOR LEASE

12,400 SF

ZONING

IL1

LEASE RATE

\$9.25 PSF

OCCUPANCY COSTS

\$3.90 PSF

POSSESSION

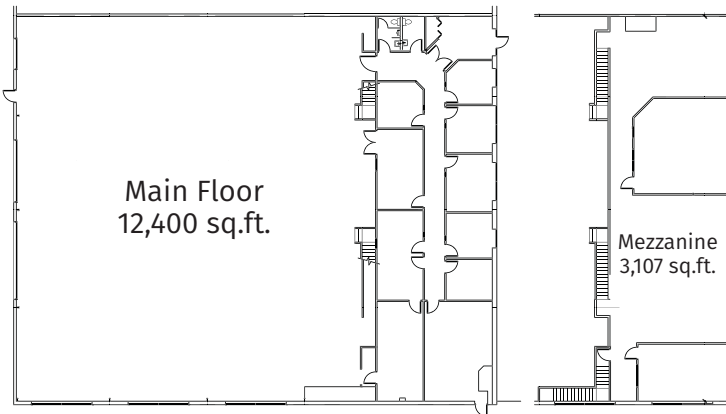
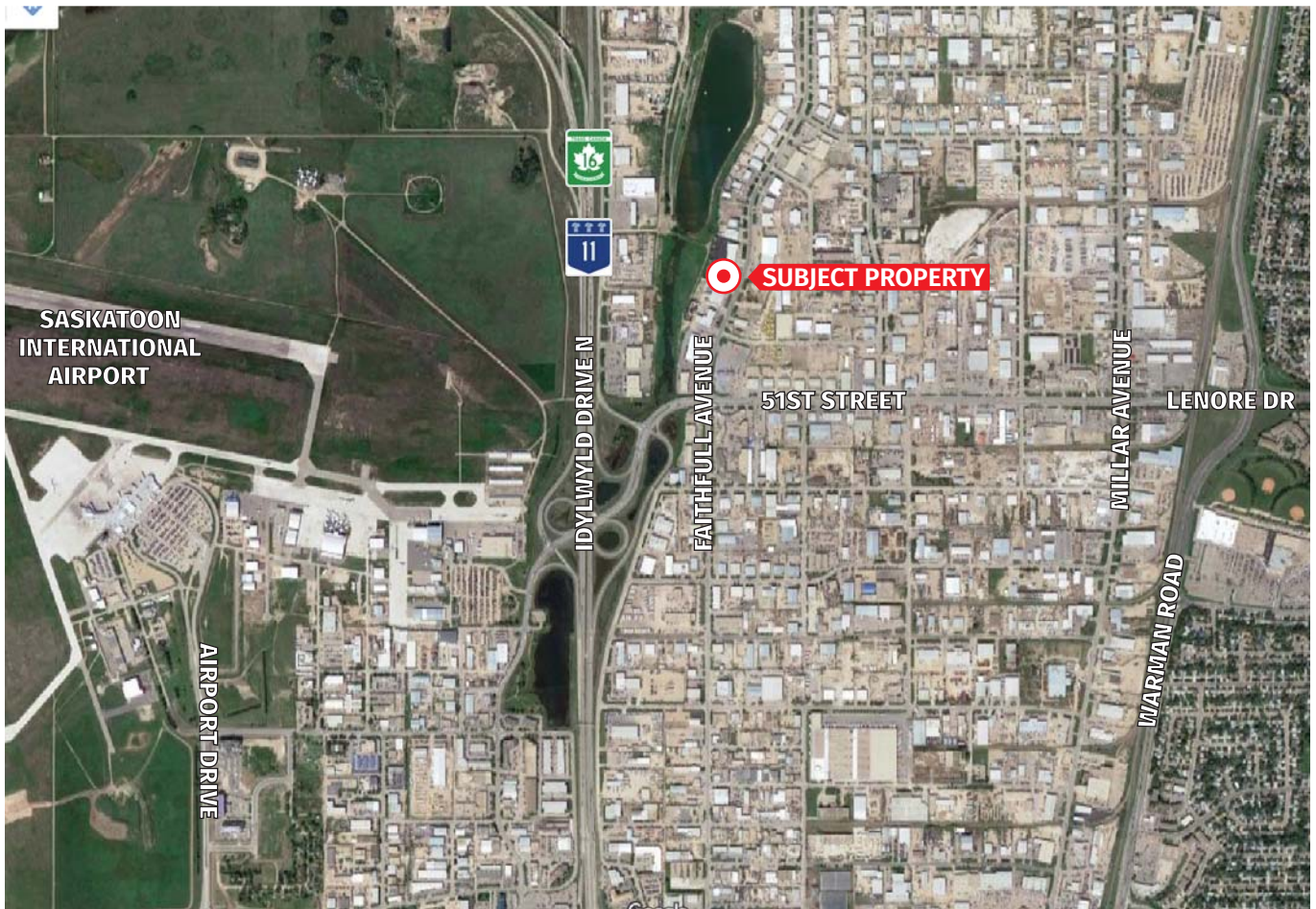
Immediate

MARY HIPPERSON
Commercial Sales & Leasing
306 715 8700
mhipperson@concordgroup.com

1171 Eighth Street East
Saskatoon SK S7H 0S3
306 668 3004
www.cgproperties.com

CONCORDE
PROPERTIES

2915A FAITHFULL AVENUE



MARY HIPPERSON
Commercial Sales & Leasing
306 715 8700
mhipperson@concordgroup.com

1171 Eighth Street East
Saskatoon SK S7H 0S3
306 668 3004
www.cgproperties.com

CONCORDE
PROPERTIES