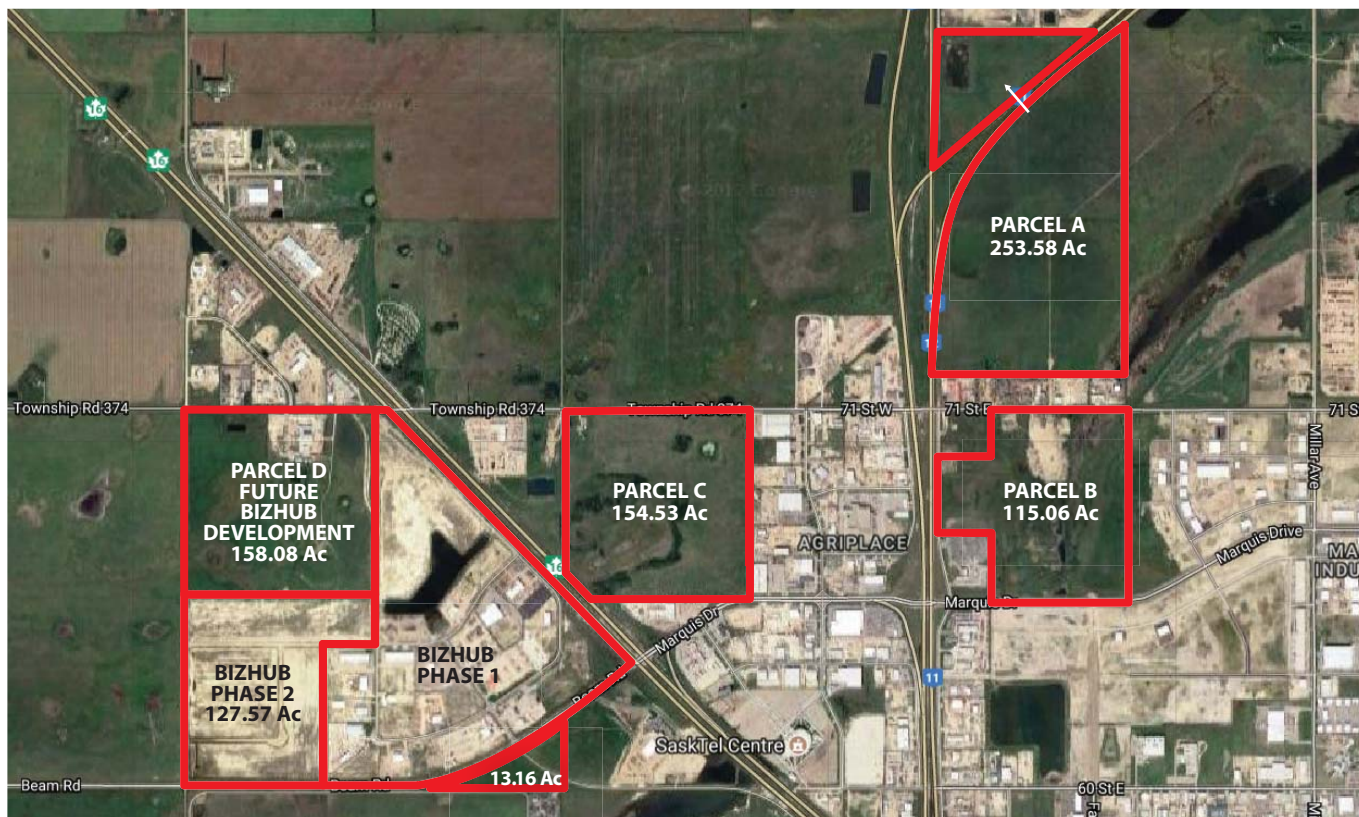


FOR LEASE > INDUSTRIAL LAND

NORTH LAND HOLDINGS

SASKATOON, SK



With the continued growth of Saskatoon's North Industrial Sector, this land, deemed for future development, will play a vital role in filling the demand of our city's industrial businesses. These well-positioned parcels will provide businesses with direct access to Faithfull Avenue, 71st Street, BizHub Industrial Park, Marquis Drive and Highways 11, 12 and 16.

AREA FOR LEASE

- A - 253.58 ACRES
 - B - 115.06 ACRES
 - C - 154.53 ACRES
 - D - 158.08 ACRES
- (Future BizHub Development)

ZONING

IL1

POSSESSION

Immediate

MARY HIPPERSON
Commercial Sales & Leasing
306 715 8700
mhipperson@concordegroupp.com

1171 Eighth Street East
Saskatoon SK S7H 0S3
306 668 3004
www.cgcproperties.com

CONCORDE
PROPERTIES