

FOR LEASE > WAREHOUSE

2911 FAITHFULL AVENUE

SASKATOON, SK



Front Exterior



Rear Exterior



Premium warehouse space located on Faithfull Avenue in the heart of Saskatoon's North Industrial District. This prime location provides ease of access to Circle Drive, Idylwyld Drive, Highways 16, 11 and 12 and Saskatoon John G. Diefenbaker International Airport.

BUILDING PARTICULARS

- > Surface parking in front of building
- > Natural lighting
- > New high-efficiency LED lighting throughout the warehouse/office
- > Great street appeal
- > Fenced compound behind space
- > Full sprinkler system
- > Power - three phase, 400 amp, 120/208 volt
- > Overhead doors - two 12' grade door, two 10' dock doors
- > Roof height - outside (24' to deck, 21' to underside)
 - middle (27' to deck, 24' to underside)

AREA FOR LEASE

18,600 SF

ZONING

IL1

POSSESSION

Immediate

LEASE RATE

\$9.25 PSF

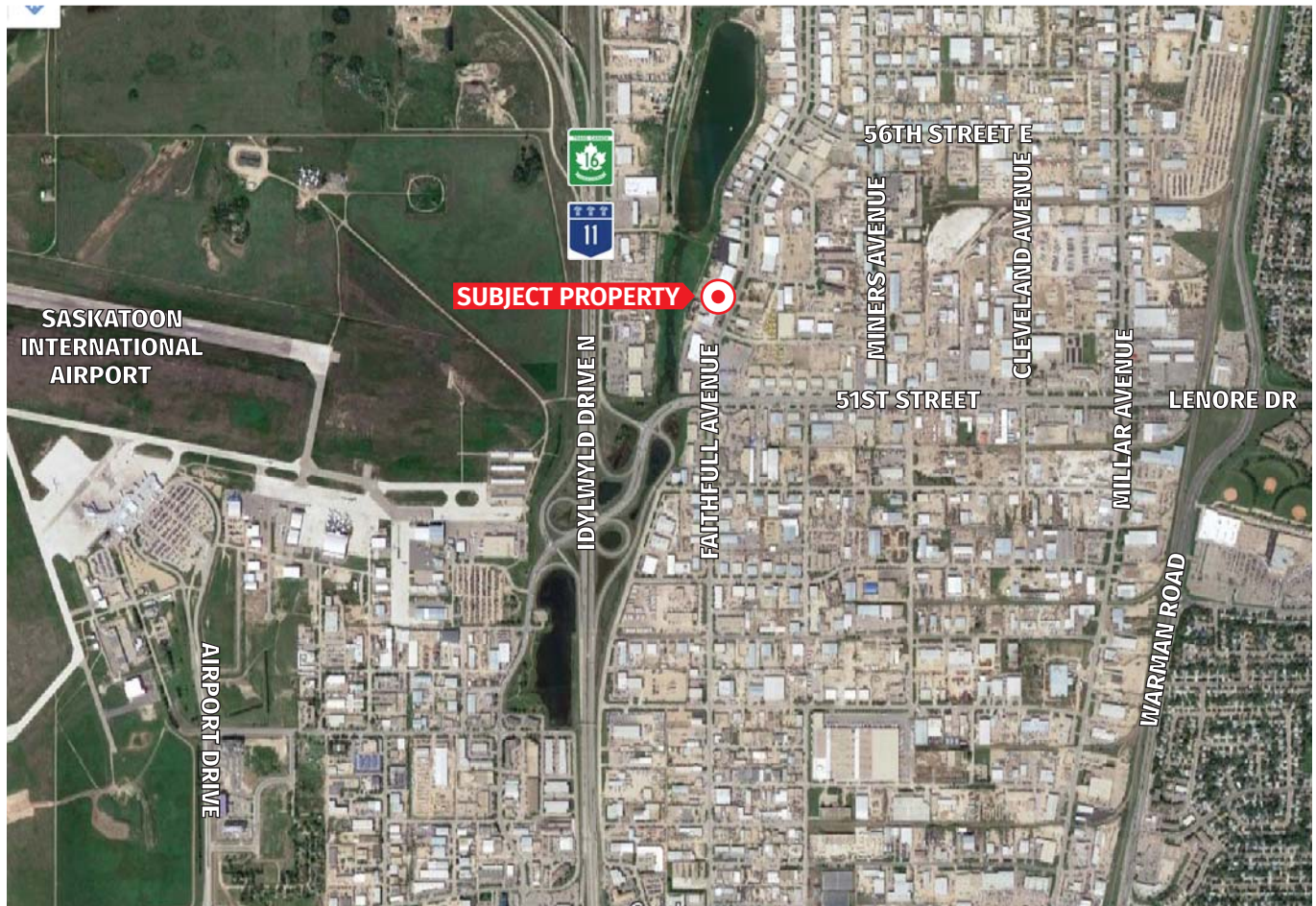
Landlord bills the Tenant back annually for: Property Taxes, Insurance & Storm Water. Additional costs such as utilities, snow removal and lawn care are the Tenants responsibility.

MARY HIPPERSON
Commercial Sales & Leasing
306 715 8700
mhipperson@concordegroupp.com

1171 Eighth Street East
Saskatoon SK S7H 0S3
306 668 3004
www.cgcpproperties.com

CONCORDE
PROPERTIES

2911 FAITHFULL AVENUE



MARY HIPPERSON
Commercial Sales & Leasing
306 715 8700
mhipperson@concordegroupp.com

1171 Eighth Street East
Saskatoon SK S7H 0S3
306 668 3004
www.cgcpproperties.com

CONCORDE
PROPERTIES