

FOR LEASE > INDUSTRIAL/RETAIL

HERITAGE BUSINESS PARK

UNITS 301-302 2750 FAITHFULL AVENUE, SASKATOON, SK



Heritage Business Park is located on the corner of Faithfull Avenue and 51st Street in Saskatoon. This premium location allows for easy access to Circle Drive, Idylwyld Drive, Highways 16, 11 and 12 and Saskatoon John G. Diefenbaker International Airport. Units 301-302 are situated behind Heritage Business Park with access to 50th Street.

BUILDING PARTICULARS

- > Ample surface parking
- > Front retail area with offices and washrooms
- > 1 - 8 foot overhead door
- > 1 - 10 foot overhead door
- > 21' clear span ceiling
- > Opportunity to demise to create smaller units

AREA FOR LEASE

7,271 SF

Opportunity to demise to create smaller units

ZONING

IL1

LEASE RATE

\$8.25 PSF

OCCUPANCY COSTS

\$4.25 PSF

POSSESSION

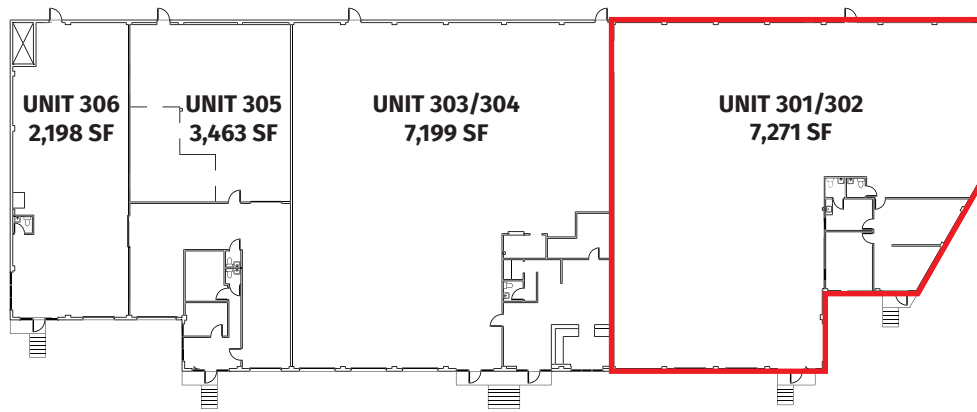
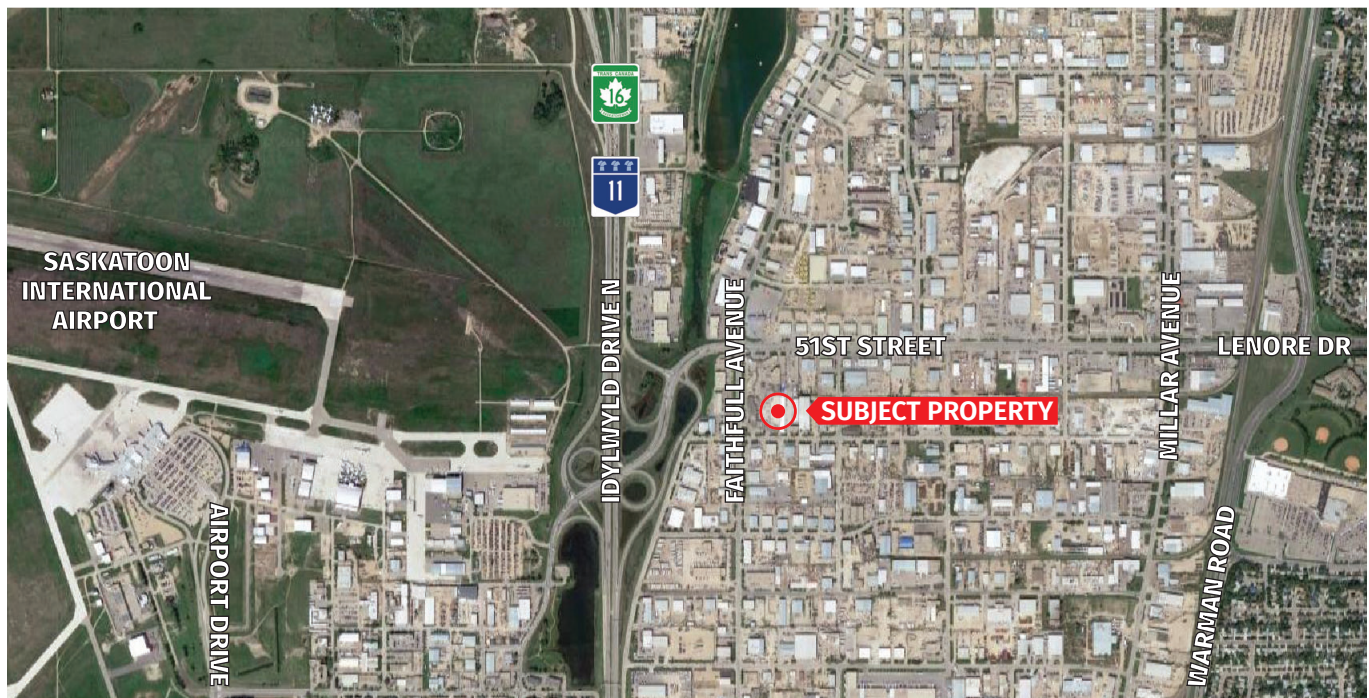
Immediate

MARY HIPPERSON
Commercial Sales & Leasing
306 715 8700
mhipperson@concordegroupp.com

1171 Eighth Street East
Saskatoon SK S7H 0S3
306 668 3004
www.cgcproperties.com

CONCORDE
PROPERTIES

UNITS 301-302 2750 FAITHFULL AVENUE



MARY HIPPERSON
Commercial Sales & Leasing
306 715 8700
mhipperson@concordegroupp.com

1171 Eighth Street East
Saskatoon SK S7H 0S3
306 668 3004
www.cgcpproperties.com

CONCORDE
PROPERTIES