

FOR LEASE > WAREHOUSE/OFFICE/SHOWROOM

418A 50TH STREET

UNIT 101, SASKATOON, SK



Located directly behind Heritage Business Park on the corner of 51st Street and Faithfull Avenue, 418A has drive through access to both 50th and 51st Street. This premium location allows for easy access to Circle Drive, Idylwyld Drive, Highways 16, 11 and 12 and Saskatoon John G. Diefenbaker International Airport.

BUILDING PARTICULARS

- > Showroom space and two large, executive-size offices
- > Kitchen area
- > Washroom
- > Large shop/warehouse space
- > 1 - 12' grade overhead door
- > HVAC unit and hanging heaters
- > Three (3) phase power
- > End cap unit on 50th Street
- > Building signage available

AREA FOR LEASE

2,400 SF

ZONING

IL1

LEASE RATE

\$9.75 PSF

OCCUPANCY COSTS

\$4.00 PSF

POSSESSION

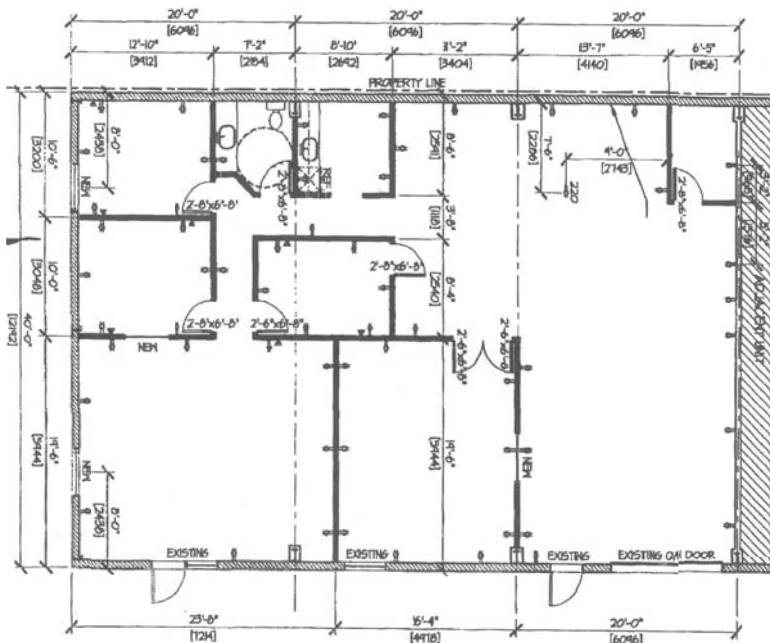
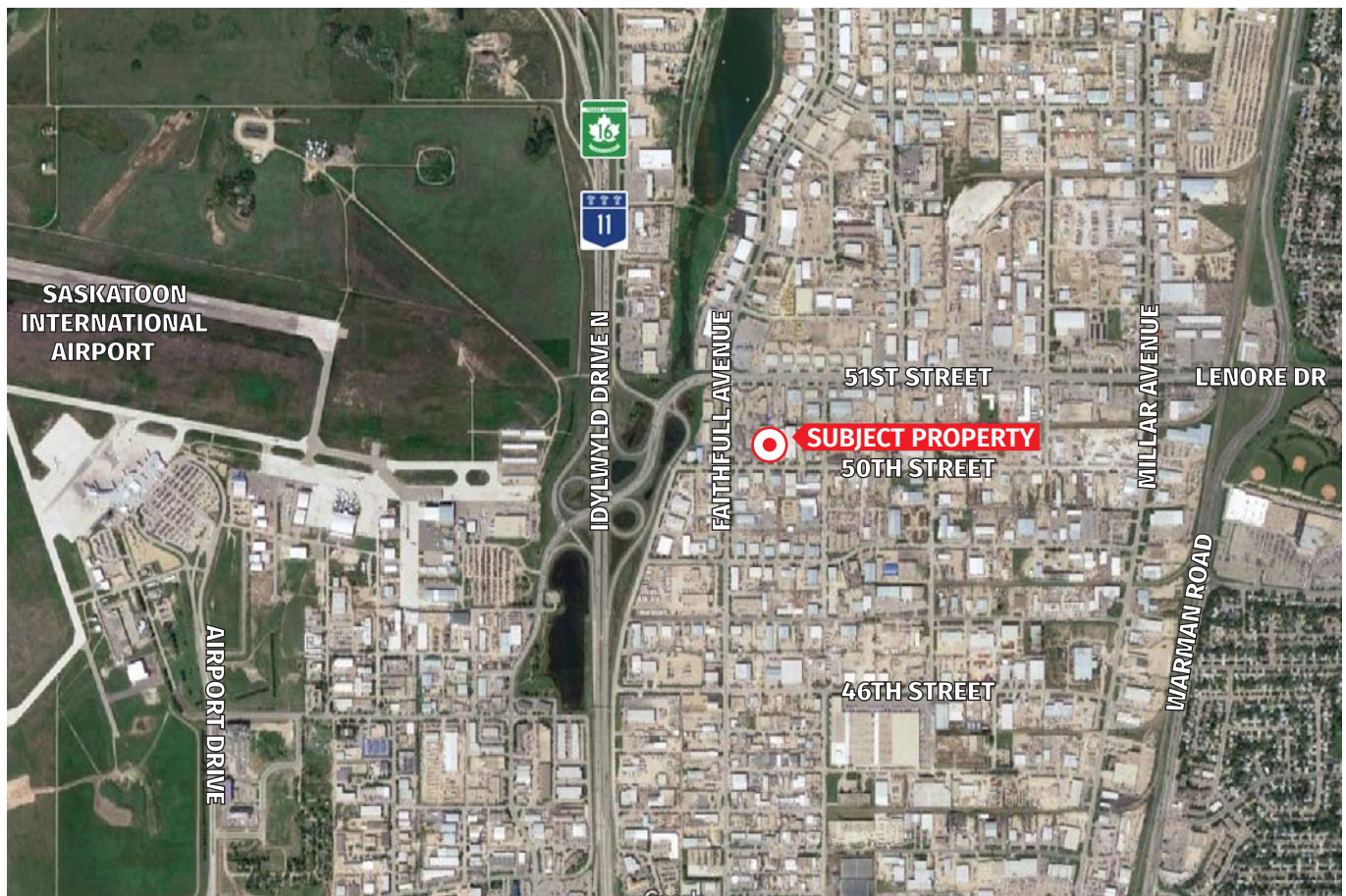
Immediately

MARY HIPPERSON
Commercial Sales & Leasing
306 715 8700
mhipperson@concordegroupp.com

1171 Eighth Street East
Saskatoon SK S7H 0S3
306 668 3004
www.cgcpproperties.com

CONCORDE
PROPERTIES

UNIT 101 418A 50TH STREET



MARY HIPPERSON
Commercial Sales & Leasing
306 715 8700
mhipperson@concordegroupp.com

1171 Eighth Street East
Saskatoon SK S7H 0S3
306 668 3004
www.cgcproperties.com

CONCORDE
PROPERTIES