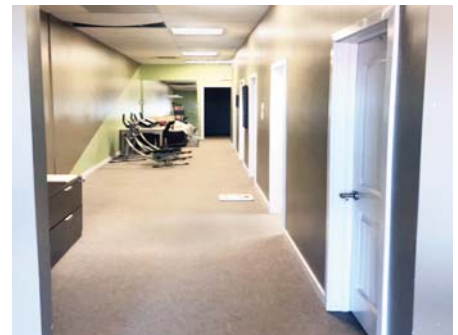


FOR LEASE > RETAIL

BEDFORD SQUARE

UNIT 1B 3110 8TH STREET E, SASKATOON, SK



Bedford Square is located on 8th Street, Saskatoon's busiest commercial thoroughfare. This premium location allows for easy access to Circle Drive, Highways 16, 11 and 12. Surrounding affluent neighbourhoods include: Greystone Heights, Grosvenor Park, Wildwood, College Park and Eastview.

BUILDING PARTICULARS

- > One washroom
- > Front and back man doors
- > 15 feet of frontage
- > Signage available above space
- > Roof top unit above space
- > Front customer and rear employee parking
- > Pylon signage available

AREA FOR LEASE

1,041 SF

ZONING

B4

LEASE RATE

\$28.00 PSF

OCCUPANCY COSTS

\$8.70 PSF

POSSESSION

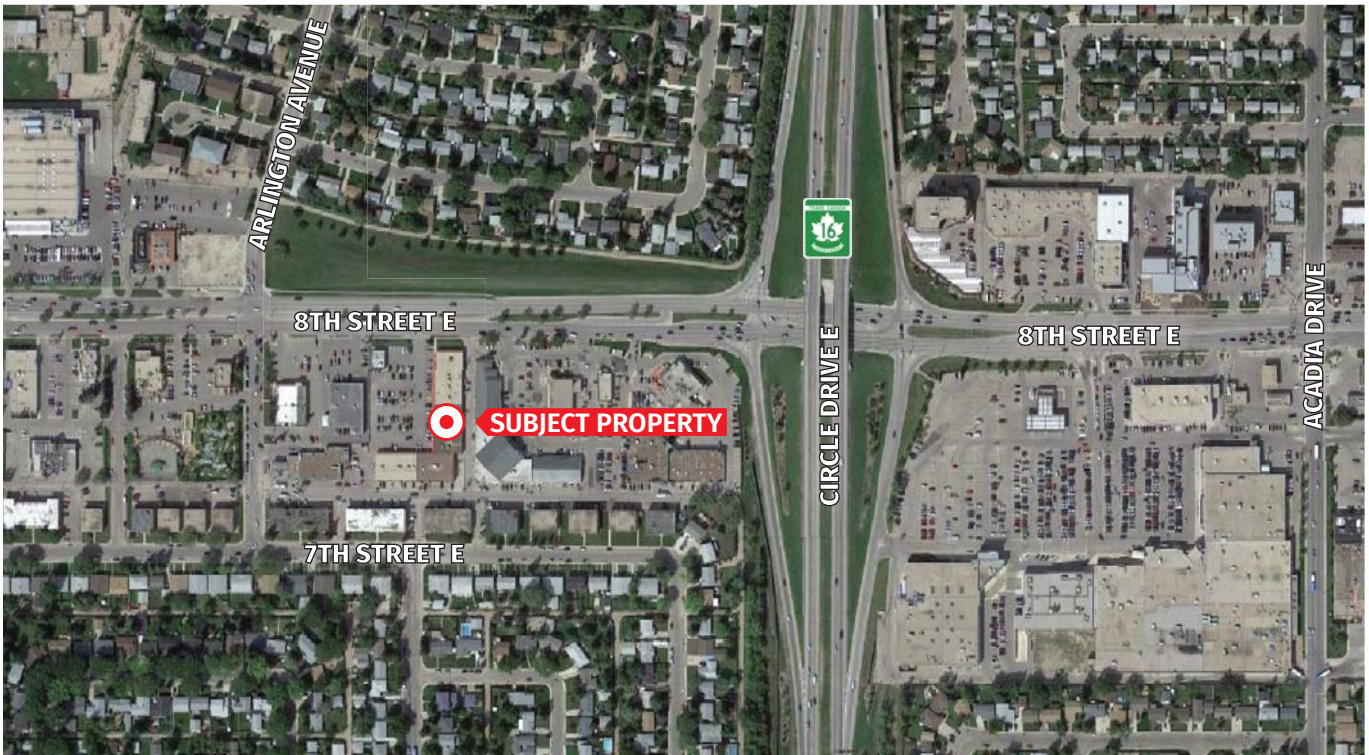
March 1, 2021

MARY HIPPERSON
Commercial Sales & Leasing
306 715 8700
mhipperson@concordgroup.com

1171 Eighth Street East
Saskatoon SK S7H 0S3
306 668 3004
www.cgproperties.com

CONCORDE
PROPERTIES

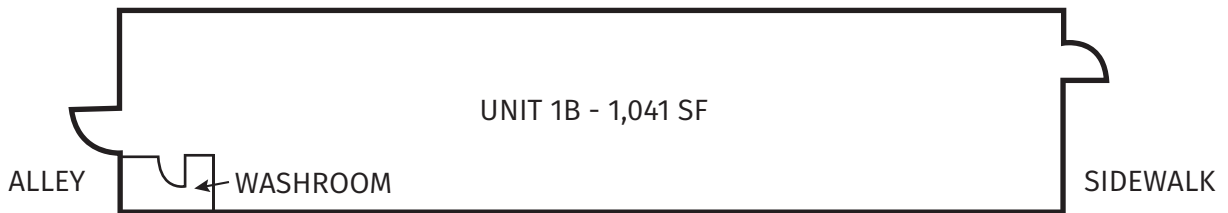
UNIT 1B 3110 8TH STREET E



HIGH PROFILE MALL/AREA TENANTS

- > CAA Saskatchewan
- > Saskatoon Medical Imaging
- > The UPS Store
- > Chel Salonspa
- > Invision Eye Care Centre
- > YXE Dental
- > Pizza Hut
- > TD Bank
- > Popeye's Chicken

FLOOR PLAN



MARY HIPPERSON
Commercial Sales & Leasing
306 715 8700
mhipperson@concordegroupp.com

1171 Eighth Street East
Saskatoon SK S7H 0S3
306 668 3004
www.cgproperties.com

CONCORDE
PROPERTIES