

FOR LEASE > INDUSTRIAL/RETAIL

45A STREET E

UNIT 504, SASKATOON, SK



Great central north end space located just off Faithfull Avenue. Property has easy access to 51st Street, Circle Drive, Idylwyld Drive, Highways 16, 11 and 12 and Saskatoon John G. Diefenbaker International Airport.

BUILDING PARTICULARS

- > Six (6) grade overhead doors at the rear of the building
- > Ceiling Height: 14 feet
- > Exterior facelift to the building was completed in 2016

AREA FOR LEASE

20,288 SF

ZONING

IL1

NET ASKING RATE

\$9.00 PSF

OCCUPANCY COSTS

\$2.95 PSF

POSSESSION

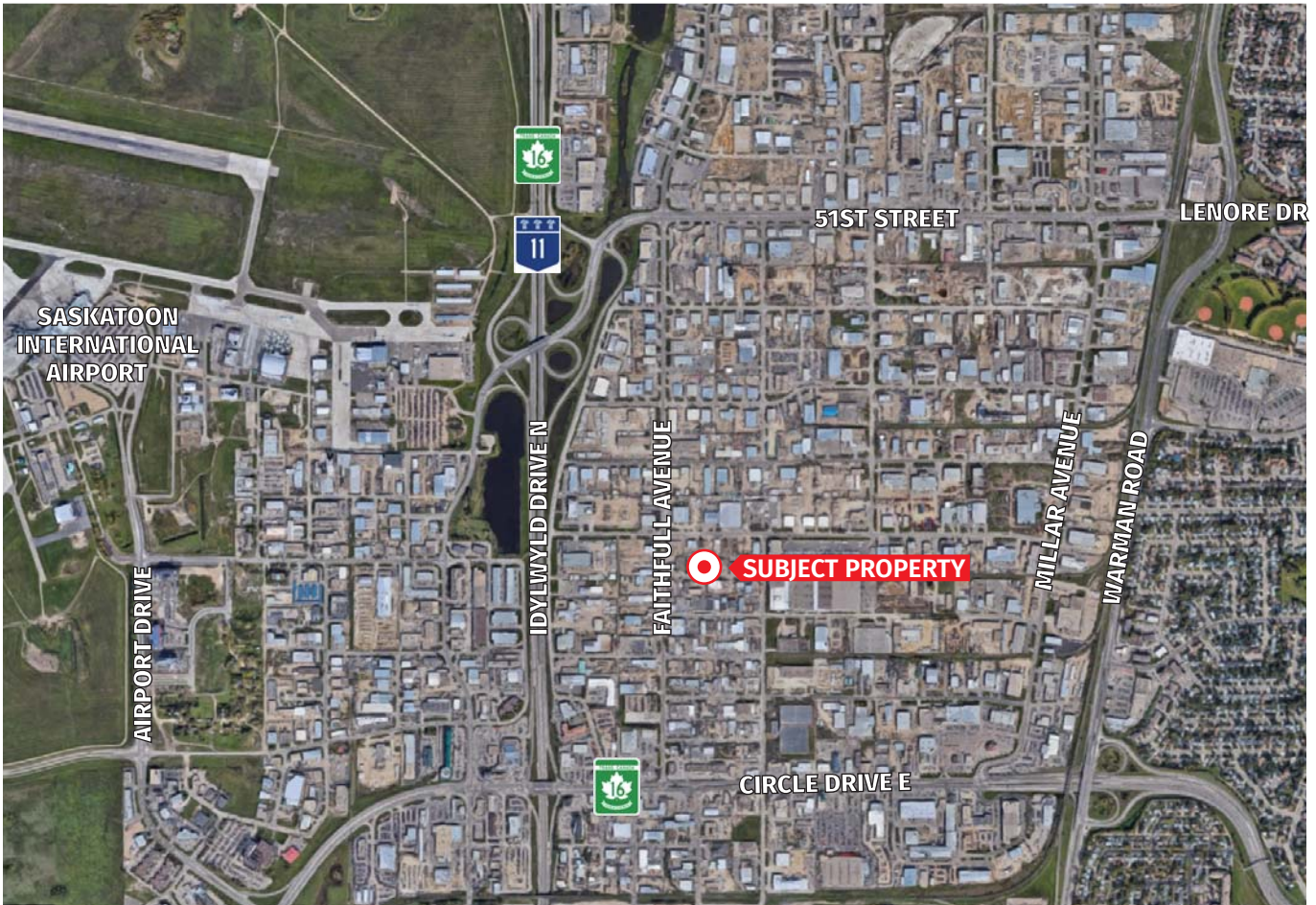
February 1, 2021

MARY HIPPERSON
Commercial Sales & Leasing
306 715 8700
mhipperson@concordgroup.com

1171 Eighth Street East
Saskatoon SK S7H 0S3
306 668 3004
www.cgproperties.com

CONCORDE
PROPERTIES

UNIT 504 45A STREET E



MARY HIPPERSON
Commercial Sales & Leasing
306 715 8700
mhipperson@concordegroupp.com

1171 Eighth Street East
Saskatoon SK S7H 0S3
306 668 3004
www.cgproperties.com

CONCORDE
PROPERTIES